

SPONTANEOUS CHALLENGE EXAMPLE

a

QUESTION

When does Red equal Blue?

b

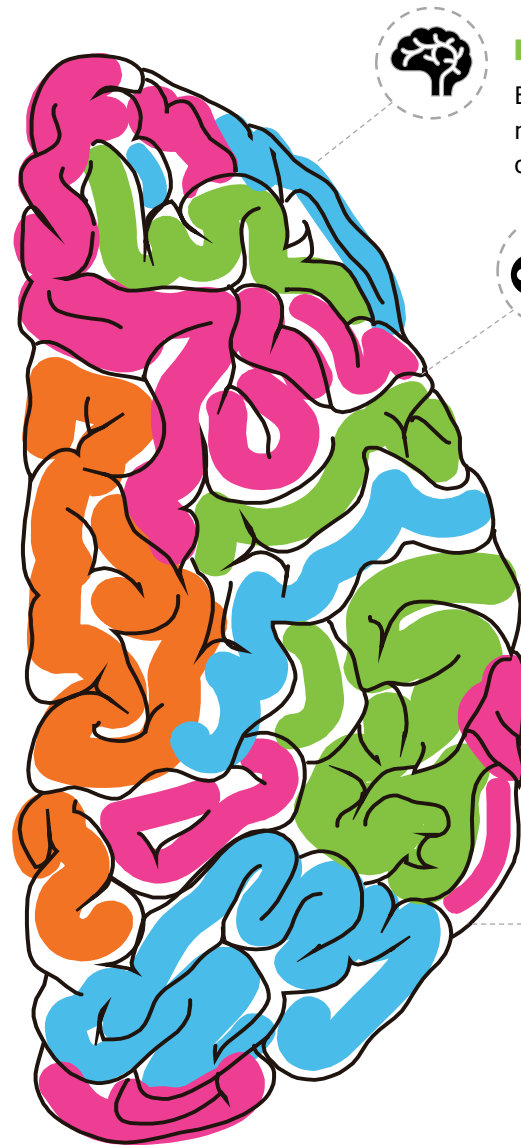
CHALLENGE

Your team is to decide on three situations when this could be true.

c

PRESENTATION

You have four minutes to decide on your team's most creative responses and one minute to give your response.



BRAINSTORMING

Brainstorming skills are critical as challenges ask students to generate many ideas quickly. Effective groups listen, defer judgment, allow the outlandish, participate and take risks.

STRUCTURE

Elements of thinking tools such as SCAMPER or Ryan's Thinking Keys are often identifiable in short term challenges. In this case Ryan's commonality key is being employed.

GROUP PROCESS SKILLS

Creating, Imagining and Innovating are important during this challenge. Think about how something might be done differently from the "norm"; propose new ideas; strive for originality; and consider novel suggestions others might make.

The limited time means that effective groups are familiar with the group skills required. Members take on allocated roles with time management and problem checking being critical to completing the challenge.

EVALUATION

A creative response will:

- Move from the simple to diverse
- Seek causal relationships
- Interpret intended meanings
- Seek out synonyms, group and classify
- Seek a variety of solutions